



RENOVATION MATERIAL RESTRICTIONS

NOTE: The following renovation materials are not accepted unless test documentation is provided resulting in **0% containing** or a valid date stamp of **1990+** is displayed on the material.
We recommend Island EHS for material lab testing | islandehs.ca | 778-406-0933



DRYWALL



PLASTER



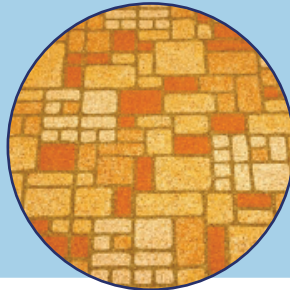
STUCCO



**PAPER/FOIL BACKED
INSULATION**



VERMICULITE



LINOLEUM



**VINYL
FLOORING/DECKING**



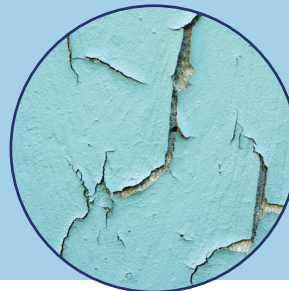
CEILING TILE



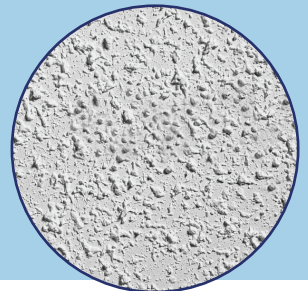
BLOWN INSULATION



CEMENT BOARD



LEAD PAINT



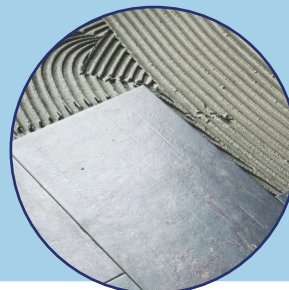
**TEXTURED DRYWALL
COATING**



HEATING DUCT TAPE



PIPE INSULATION



TILE MORTAR/GROUT



**ASPHALT SHINGLES/
TORCH-ON ROOFING**